

- ✓ Fast and Efficient **MEP Line Computation**
- ✓ Create **Automated Piping** and **Real-time Adjustments**
- ✓ **Clash Avoidance**

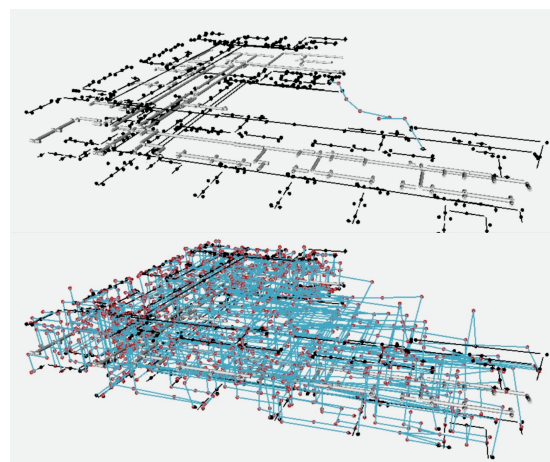
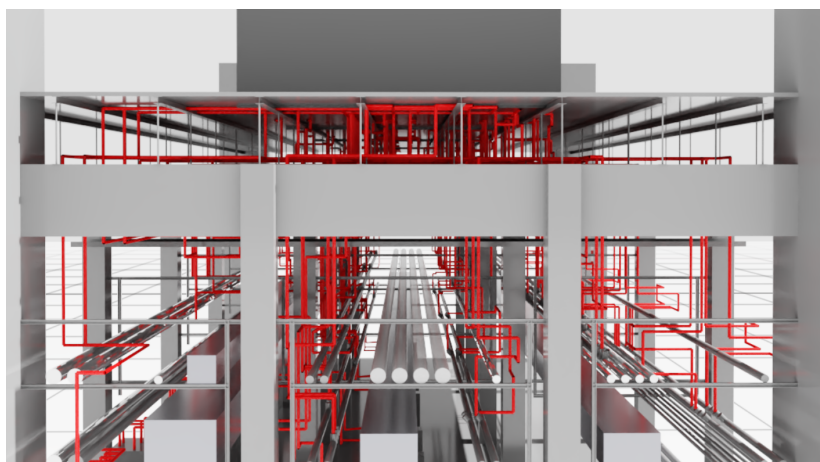
ROUTi-AI

High Tech MEP **Ver. 1.1.0**



What is ROUTi-AI?

ROUTi-AI is an innovative solution specialized for MEP (Mechanical, Electrical, Plumbing) design of large-scale factories and facilities. This system is particularly beneficial for large-scale projects, solving complex piping design challenges and maximizing efficiency through quick design time and high flexibility.



ROUTi-AI

High Tech MEP

Ver. 1.1.0

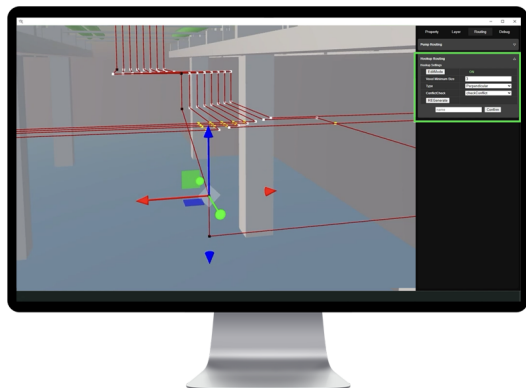
ROUTi-AI automatically converts routing information exported in the 3D Viewer to BIM information, which can be imported to Autodesk Revit. ROUTi-AI plays a crucial role in solving extraordinarily large and complex industrial plant design problems, far beyond the scope of human thought. The software ensures more accurate industrial plant designs, guaranteeing a safer construction environment. The software minimizes the environmental impact in the design, construction, and management of the facility through its advanced technology.



01. Fast and Efficient **MEP Line Computation**

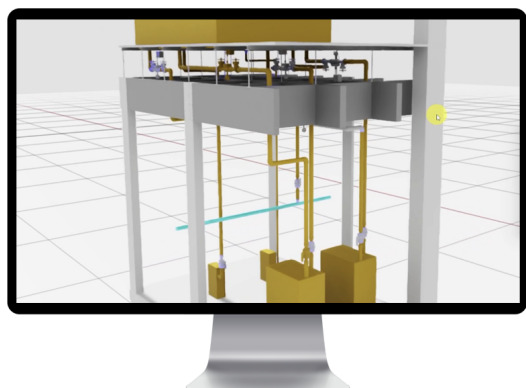
ROUTi-AI can compute more than 1,000 MEP lines simultaneously, making the design process highly efficient.

ROUTi-AI can complete the secondary piping hook-up design in under 10 minutes for a single piece of equipment, **significantly reducing design time.**



02. Automated Piping Creation and **Real-time Parameter Adjustments**

ROUTi-AI allows for real-time modification of parameters such as pipe diameter, the number of elbows, and objects to avoid, **providing high flexibility in the design process.**



03. **Clash Avoidance**

The system automatically avoids clashes with existing structures and piping lines as well as with newly generated piping lines.

This function ensures that the design proceeds smoothly without interference, **preventing potential issues during construction.**

SLZ is a leading **Smart Construction Technology** company

SLZ is growing as a corporate brand that converges traditional construction and IT development.

SLZ is a professional construction company recognized with the highest level of BIM-XR construction technology in South Korea.

Based on BIM (Building Information Modeling) data in international standards, we develop virtual reality digital twin software for construction sites, leveraging our own technology to enhance on-site construction quality.

Our company is a first-class professional construction company in South Korea that applies the BIM-XR and BIM-AI solution services developed directly to the construction site to gain practical experience.

